



Ciphr Payroll v2024.1.0

March 2024 Release Notes

05 March 2024 | V1.0

Ciphr Limited

3rd Floor, 33 Blagrove Street, Reading, RG1 1PW | +44 (0)1628 814000 | info@ciphr.com | ciphr.com

Ciphr Limited - Registered in England No: 04616229. Registered Office: 3rd Floor, 33 Blagrove Street, Reading, RG1 1PW. VAT Registration No: 242 6611 24

Ciphr Payroll Release Notes – March 2024

For use by Ciphr staff and Ciphr customers only

Legislative Changes

- DEV-23945 - Prepared system for 2024-2025 tax year
- DEV-26206 - Incorporated new rates for Tax Year 2425
- DEV-23946 - Incorporated new Investment Zone NIC category letters (N,E,K,D)
- DEV-23947, DEV-25548 - Updated validation of Investment Zone NI letters on employee entry form
- DEV-23948 - Updated validation of Investment Zone NI letters in calculation script
- DEV-23949 - Updated NI calculation routines including Calculation for Investment Zone
- DEV-23950 - Updated Investment Zone NI letters on employee entry table
- DEV-23951 - Updated RTI FPS creation function, added Investment Zone NI letters
- DEV-23975 - Incorporated Paternity Pay and Leave changes from 6 April 2024
- DEV-24596 - SMP Gender extension from April 2024
- DEV-24788 - Updated Import CSV field selection SW22 name to include Investment Zone
- DEV-24993 - Updated RTI Data Validation Dialog function, added Investment Zone NI letters
- DEV-25579 - Updated Directors NI letters calculation
- DEV-26365 - New income tax band for higher earners in Scotland
- DEV-26723 - Top rate Tax code (SD3) for Scottish rates
- DEV-26633 - Completed testing against HMRC test cases - Tax-test-data-examples-from-April-2024-v1.1
- DEV-23952, DEV-26460, DEV-27498 - Completed testing against HMRC test cases - NI-test-data-examples-from-April-2024-v1.0, NI-test-data-examples-from-April-2024-v2-0
- DEV-27095 - Updated Student Loans thresholds for Type1 and Type 4. Completed testing against HMRC test cases - 2024-25-Student-Loan-Threshold-Examples-v1-0__1_
- DEV-26458 - P60 templates for 23/24 Tax Year
- DEV-27498 - Spring Budget 2024 changes - the main rate of primary Class 1 National Insurance contributions will be cut by 2 percentage points from 10% to 8% from 6 April 2024.

Ciphr Limited

3rd Floor, 33 Blagrove Street, Reading, RG1 1PW | +44 (0)1628 814000 | info@ciphr.com | ciphr.com

Ciphr Limited - Registered in England No: 04616229. Registered Office: 3rd Floor, 33 Blagrove Street, Reading, RG1 1PW. VAT Registration No: 242 6611 24

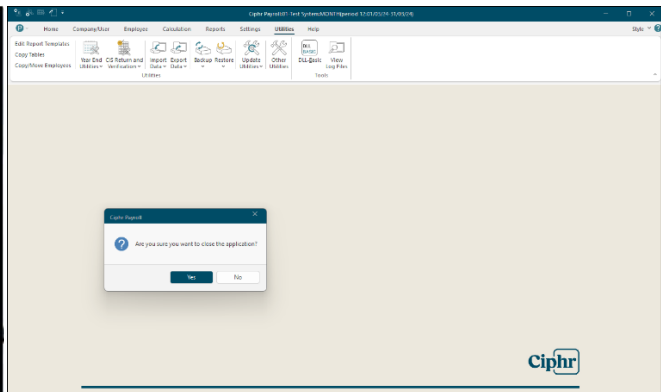
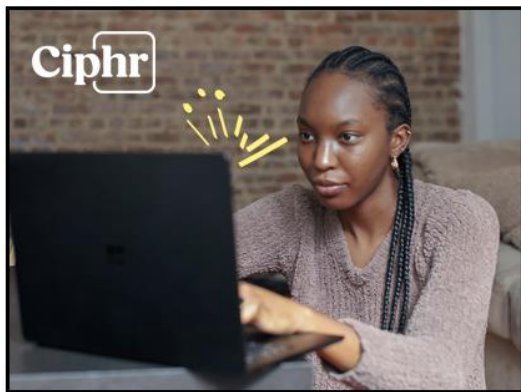
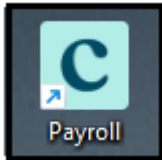
Ciphr Payroll Release Notes – March 2024

For use by Ciphr staff and Ciphr customers only

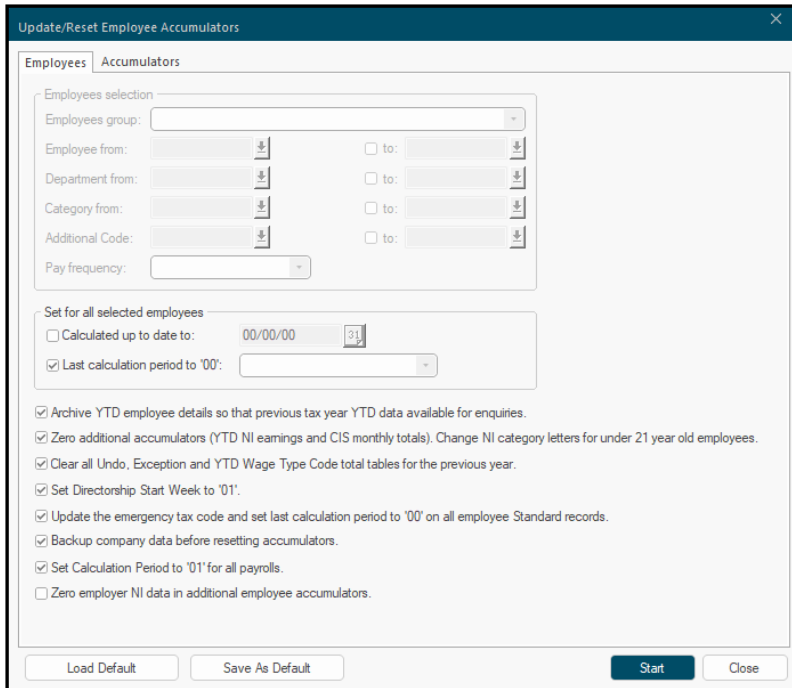
New/existing functionality improvements

DEV-27330, DEV-27591 – Ciphr Branding Update

Accord Payroll will now be known as Ciphr Payroll to reflect our recent rebranding, including new logo and colour scheme.



DEV-27327 - EOY Reset Accumulators screen look and feel improvement



Ciphr Limited

3rd Floor, 33 Blagrove Street, Reading, RG1 1PW | +44 (0)1628 814000 | info@ciphr.com | ciphr.com

Ciphr Limited - Registered in England No: 04616229. Registered Office: 3rd Floor, 33 Blagrove Street, Reading, RG1 1PW. VAT Registration No: 242 6611 24

Ciphr Payroll Release Notes – March 2024

For use by Ciphr staff and Ciphr customers only

DEV-24099 - Moved Parameter value for Car Fuel Benefit Charge multiplier to the calculation script

DEV-24553 - Merged Van and Van Fuel benefits work into 2024/25 calculation

DEV-24000, DEV-25607- Reviewed and improved SPP and SPP Adoption menu buttons/options

DEV-25143 - NI Letters validation for gender 'Male' improvements

DEV-14655, DEV-26214 - Updated VocaLink modulus checking datafile with validation file v7.50 and v7.51

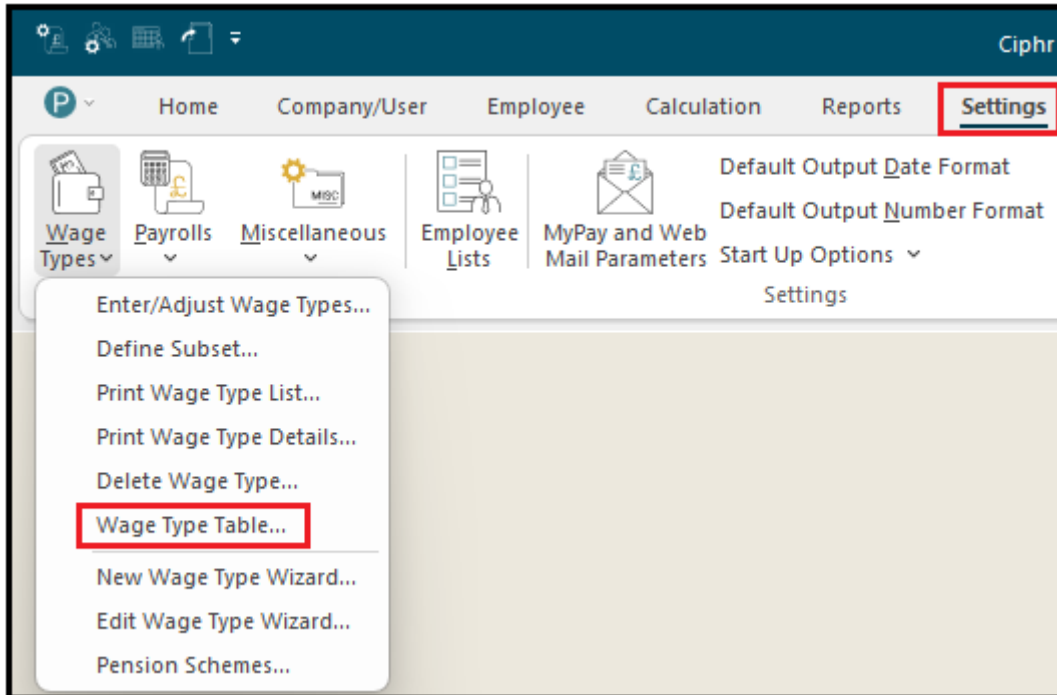
Ciphr Payroll Release Notes – March 2024

For use by Ciphr staff and Ciphr customers only

Wage Type Table reporting improvements

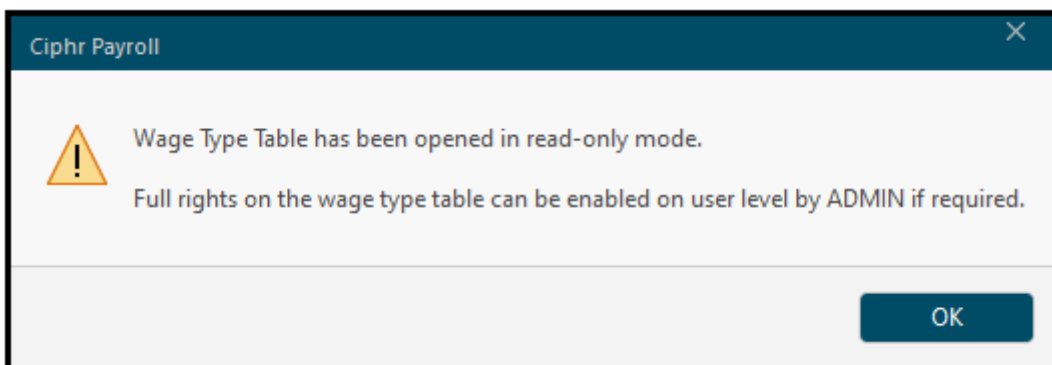
DEV-25598, DEV-25599

New Wage type table functionality is available on the system and can be accessed from the following menu **Settings > Wage types > Wage type Table...**



The new feature enables users to efficiently report on key Wage type fields within a unified window, simplifying the process of extracting data to Excel.

As a default setting, the **Wage Type Table** opens in a read-only mode, ensuring that users cannot inadvertently modify the actual Wage type setup, thereby preventing unintended changes.



Full access rights to the table can be granted by **ADMIN** to users upon request. Nevertheless, specific critical data fields remain restricted for editing, even for users with full access privileges, allowing them only to preview this information.

Ciphr Limited

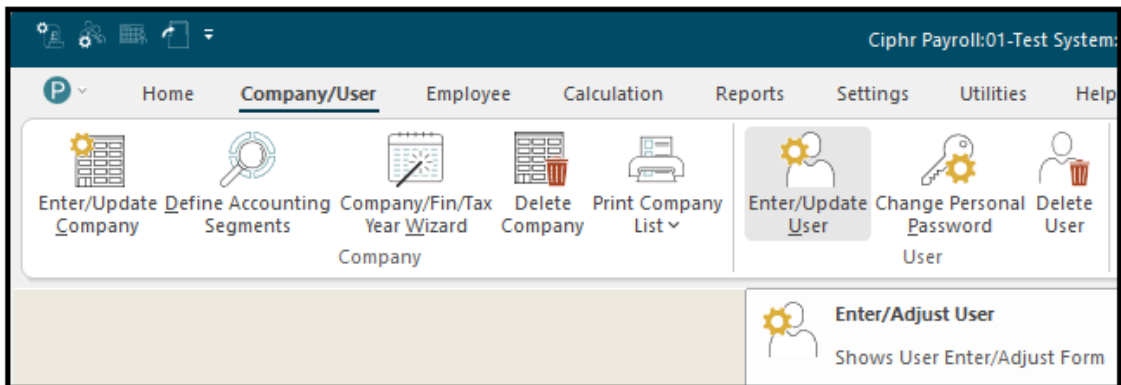
3rd Floor, 33 Blagrove Street, Reading, RG1 1PW | +44 (0)1628 814000 | info@ciphr.com | ciphr.com

Ciphr Limited - Registered in England No: 04616229. Registered Office: 3rd Floor, 33 Blagrove Street, Reading, RG1 1PW. VAT Registration No: 242 6611 24

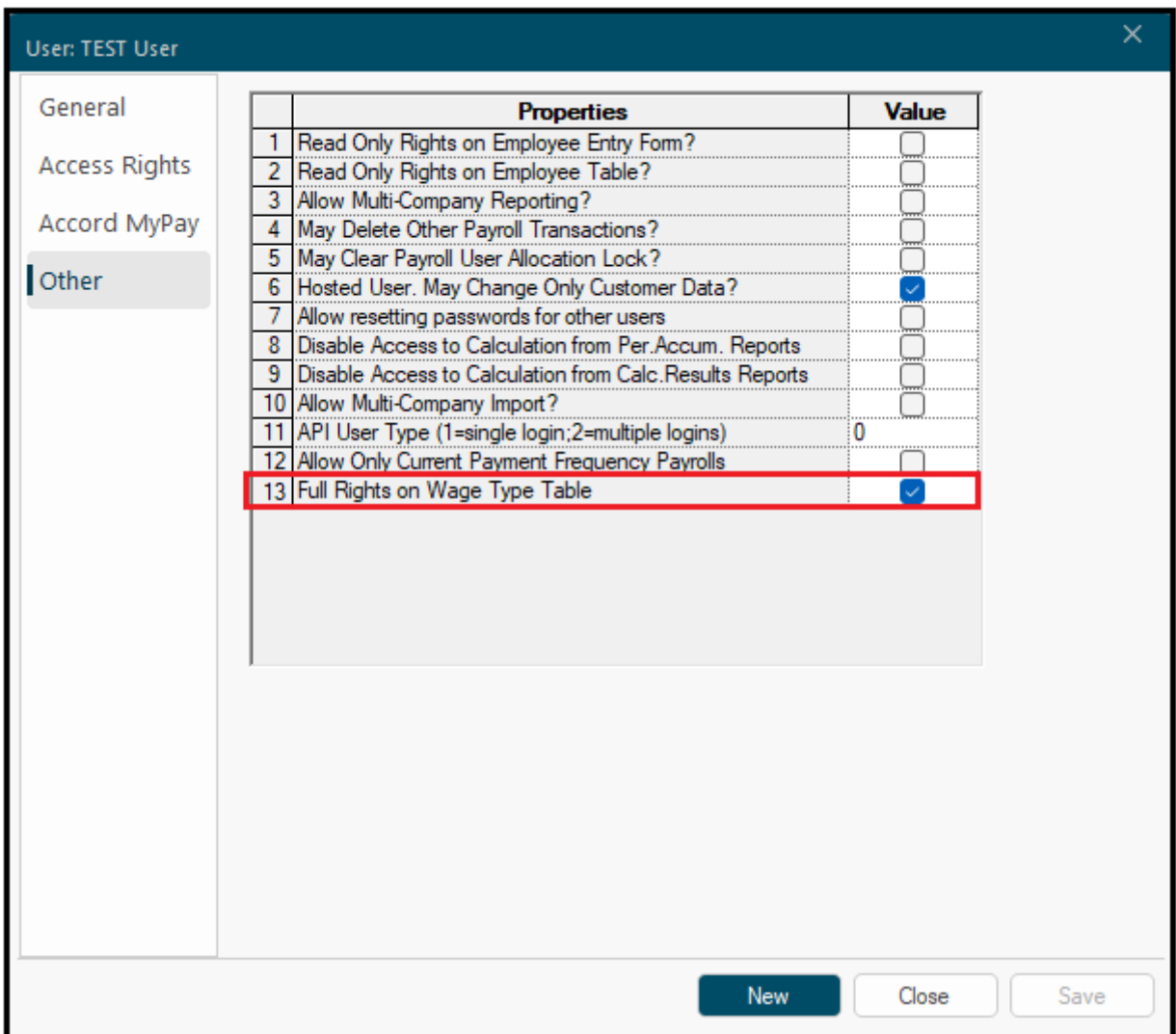
Ciphr Payroll Release Notes – March 2024

For use by Ciphr staff and Ciphr customers only

To enable full permissions rights on the Wage Type Table, login to the system as **ADMIN** and select the User record who you want to grant access to



Navigate to the **Other** tab and tick the box for line 13. Save the changes to grant **Full Rights on Wage Type Table**.



Ciphr Limited

3rd Floor, 33 Blagrove Street, Reading, RG1 1PW | +44 (0)1628 814000 | info@ciphr.com | ciphr.com

Ciphr Limited - Registered in England No: 04616229. Registered Office: 3rd Floor, 33 Blagrove Street, Reading, RG1 1PW. VAT Registration No: 242 6611 24

Ciphr Payroll Release Notes – March 2024

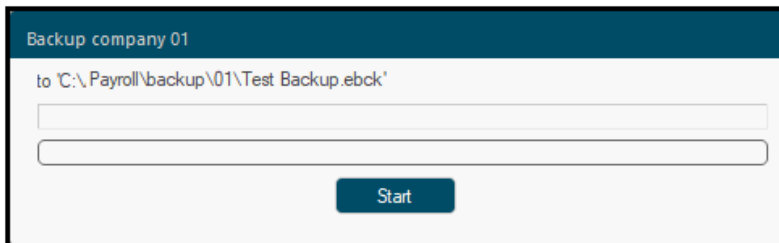
For use by Ciphr staff and Ciphr customers only

DEV-25600, DEV-25601, DEV-25602, DEV-25604 - API Data manager improvements

API import files names on Employee Filed Changes report, improved sections naming on the API Data manager, API files selection in the pending queue review.

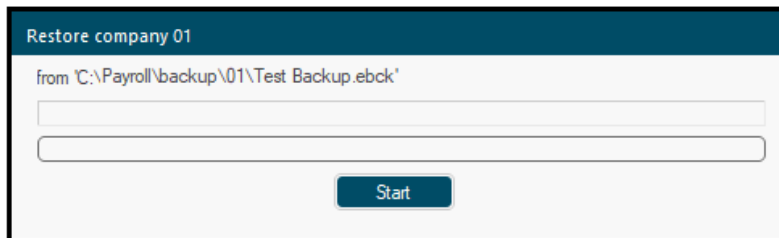
Warning/advisory message improvements

DEV-27060, DEV-27062 -Improved look and feel of the backup and restore pop-up messages



Backup company 01

to 'C:\Payroll\backup\01\Test Backup.ebck'

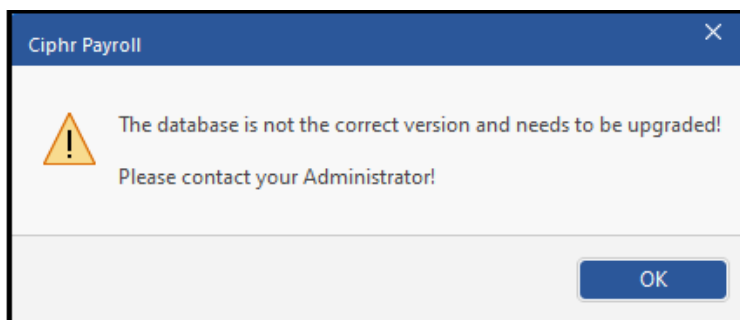


Restore company 01

from 'C:\Payroll\backup\01\Test Backup.ebck'

DEV-25619, DEV-26650 - Implement system to warn users if Database needs upgrading on SQL Server

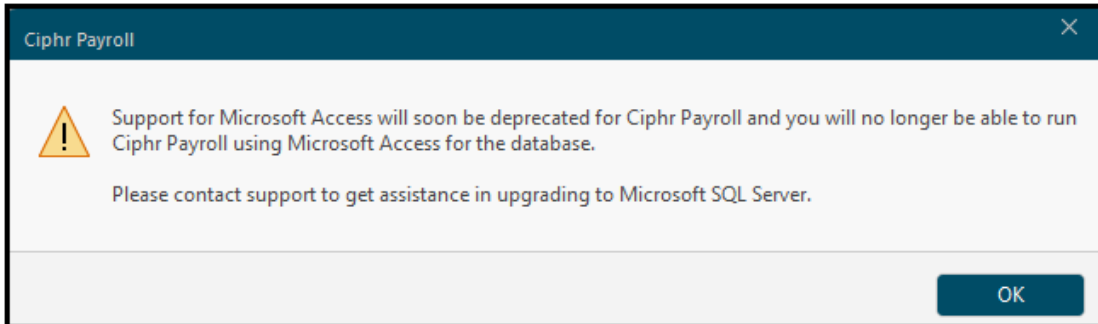
A new warning has been introduced to warn Payroll users if the SQL database is a different version from the actual application.



Ciphr Payroll Release Notes – March 2024

For use by Ciphr staff and Ciphr customers only

DEV-26216 – New warning message that Microsoft Access Support will soon be deprecated

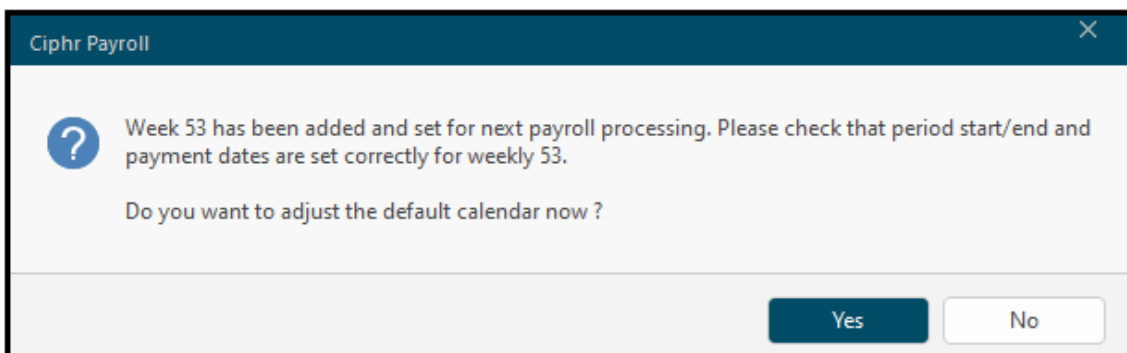


DEV-26490 - Detect old versions of SQL Server and warn if they are deprecated by Microsoft

DEV-21767 - Week 53 period - calendar dates warnings

An enhanced warning message has been implemented for Weekly and Bi-weekly Payrolls, prompting users to verify the dates for Week 53 periods.

Users with full access rights to the calendar can also seamlessly open it by selecting 'Yes' in response to the message, triggering the automatic launch of the calendar screen.



Ciphr Limited

3rd Floor, 33 Blagrove Street, Reading, RG1 1PW | +44 (0)1628 814000 | info@ciphr.com | ciphr.com

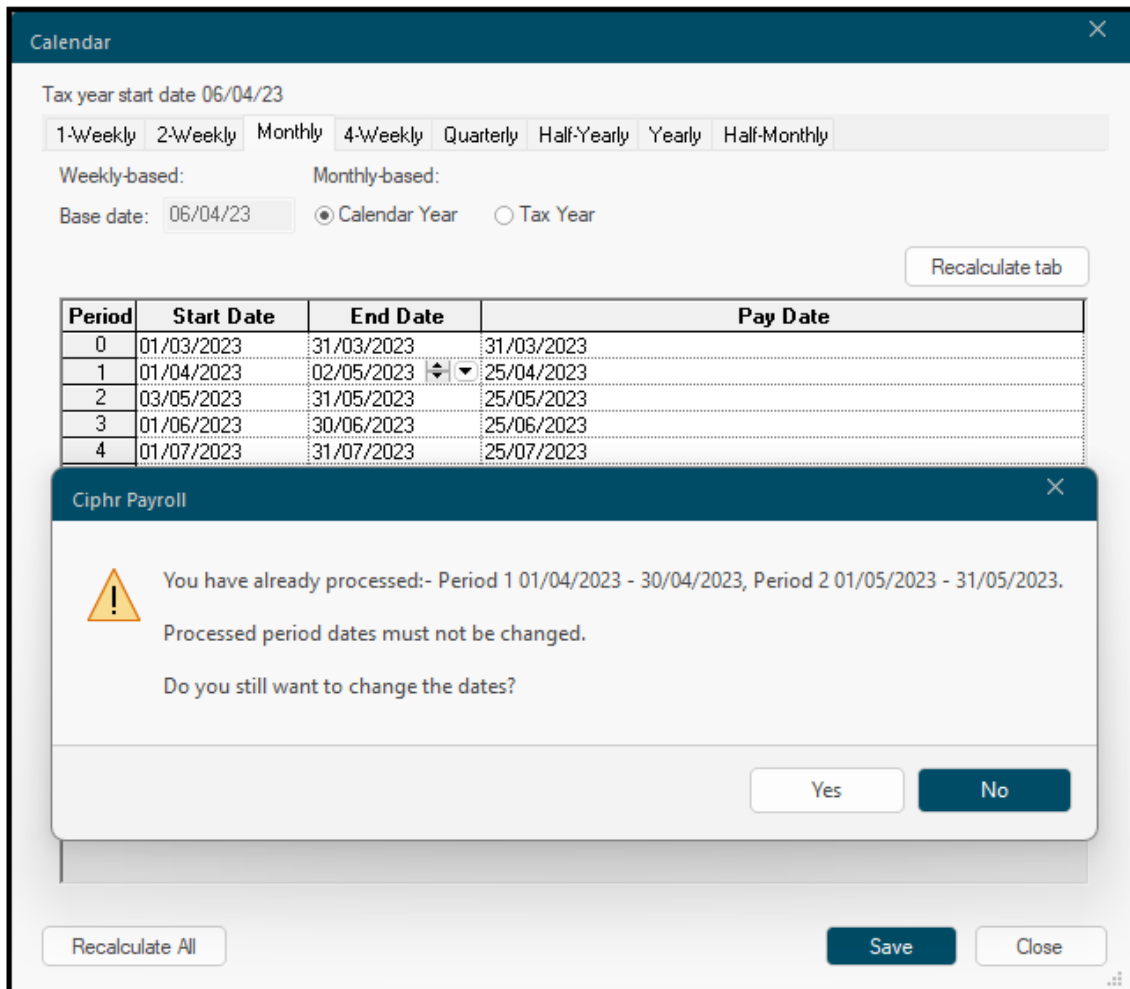
Ciphr Limited - Registered in England No: 04616229. Registered Office: 3rd Floor, 33 Blagrove Street, Reading, RG1 1PW. VAT Registration No: 242 6611 24

Ciphr Payroll Release Notes – March 2024

For use by Ciphr staff and Ciphr customers only

DEV-21771 – New warning: period dates must not be changed after first run

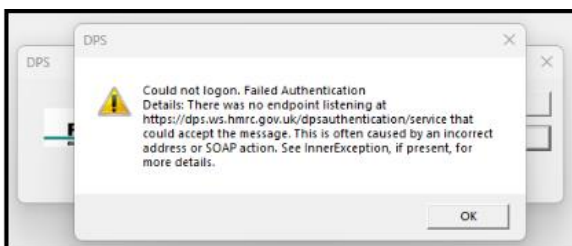
An additional warning message has been implemented to alert users when attempting to modify dates for payroll periods that have already been processed.



The screenshot shows the 'Calendar' window in the Ciphr Payroll application. The 'Tax year start date' is 06/04/23. The 'Monthly' frequency is selected. The 'Base date' is 06/04/23, and 'Calendar Year' is selected. A table displays payroll periods with columns for Period, Start Date, End Date, and Pay Date. Period 1 (01/04/2023 - 30/04/2023) and Period 2 (01/05/2023 - 31/05/2023) are highlighted. A 'Ciphr Payroll' warning dialog box is overlaid, containing a warning icon and the following text: 'You have already processed:- Period 1 01/04/2023 - 30/04/2023, Period 2 01/05/2023 - 31/05/2023. Processed period dates must not be changed. Do you still want to change the dates?'. The dialog has 'Yes' and 'No' buttons. The main window also has 'Recalculate All', 'Save', and 'Close' buttons.

Period	Start Date	End Date	Pay Date
0	01/03/2023	31/03/2023	31/03/2023
1	01/04/2023	02/05/2023	25/04/2023
2	03/05/2023	31/05/2023	25/05/2023
3	01/06/2023	30/06/2023	25/06/2023
4	01/07/2023	31/07/2023	25/07/2023

DEV-26564 - Improved DPS warning, where communication is lost between the user and HMRC service



Ciphr Limited

3rd Floor, 33 Blagrove Street, Reading, RG1 1PW | +44 (0)1628 814000 | info@ciphr.com | ciphr.com

Ciphr Limited - Registered in England No: 04616229. Registered Office: 3rd Floor, 33 Blagrove Street, Reading, RG1 1PW. VAT Registration No: 242 6611 24

Ciphr Payroll Release Notes – March 2024

For use by Ciphr staff and Ciphr customers only

DEV-27179 - new option 4 for Pay Spine/Rate Table Option with the capability to accommodate Ranks up to 10 characters while replicating the behaviour of Option 2.

This modification ensures flexibility in handling longer rank designations.

DEV-25520, DEV-25540 - Improved warning messages for SPP and SPP Adoption

DEV-24779, DEV-25445 - Improved warning message for SMP

DEV-21780, DEV-20730 - Calendar improvements

Additional warning messages on recalculate request to warn users about dates falling outside the tax year.

Ciphr Payroll Release Notes – March 2024

For use by Ciphr staff and Ciphr customers only

General Enhancements and Fixes

DEV-21539, DEV-27608 - SMP rate defect for whole weeks commencing from 2nd April 2023

The new rate for existing statutory payment plans will now only be applied to full parental pay weeks starting on or after Sunday 7th April 2024.

DEV-19107 – New financial year improvements

The process for creating a new financial year has undergone a thorough review and enhancement. Improvements have been made to the carry forward process to ensure only the selected dimensions are processed to improve speed and memory consumption.

DEV-24157 - Corrected spelling mistake on the LAN file

DEV-25858, DEV-26638, DEV-25196 - EOY data validation, RTI data validation updated to include Freeport and Investment Zone NI letters

DEV-25680 - Investment Zone letter D Employment Entry dialog missing validation CA2700

DEV-25433 - Show actual Product name for the message boxes

DEV-26576 - Expanded Start date field on Costs History records screen